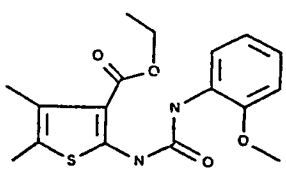
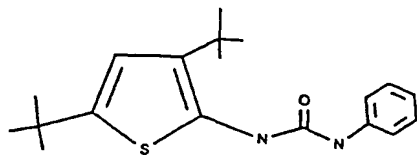


B:11 Set

CITE NO. LA

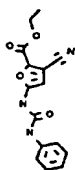
	Beilstein-RN:	7046328
	CAS-RN:	
	Field displayed:	
	Preparation	1

no.	Factname	Value
1	Starting Material BRN	387700
	Starting Material	1-isocyanato-2-methoxy-benzene
	Starting Material BRN	639582
	Starting Material	2-amino-4,5-dimethyl-thiophene-3-carboxylic acid ethyl ester
	Time	5 hour(s)
	Yield [%]	46.
	Solvent	toluene
	Journal Author	Russo, F.; Romeo, G.; Santagati, N. A.; Caruso, A.; Cutuli, V.; Amore, D., EJMCAS, Eur.J.Med.Chem.Chim.Ther., EN, 29, 7-8, 1994, 569-578



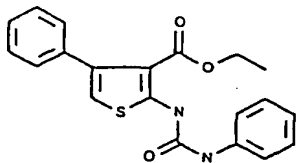
Beilstein-RN:	4756734
CAS-RN:	132574-90-4
Field displayed:	
Preparation	1

no.	Factname	Value
1	Starting Material BRN	605631
	Starting Material	aniline
	Starting Material BRN	4746253
	Starting Material	C13H19NOS
	Time	12 hour(s)
	Solvent	toluene
	Temperature [°C]	20
	Journal Author	Krayushkin, M. M.; Kalik, M. A.; Loktionov, A. A., CHCCAL, Chem.Heterocycl.Comp.(Engl.Transl.), EN, 26, 7, 1990, 756-760, KGSSAQ, RU, 7, 1990, 909-9132



Beilstein-RN:	310824
CAS-RN:	
Field displayed:	
Preparation	2

no.	Factname	Value
1	Starting Material BRN	471391
	Starting Material	isocyanatobenzene
	Starting Material BRN	1726706
	Starting Material	3,4-dicyano-2-oxo-butyrlic acid ethyl ester
	Temperature [°C]	100
	Journal Author	Wislicenus; Berg, CHBEAM, Chem.Ber., 41, 1908, 3764
2	Starting Material BRN	471391
	Starting Material	phenyl isocyanate
	Starting Material	5-amino-3-cyano-furan-carboxylic acid-(2)-ethyl ester
	Temperature [°C]	100
	Journal Author	Dieckmann, CHBEAM, Chem.Ber., 44, 1911, 986



Beilstein-RN:	5451896
CAS-RN:	106666-29-9
Field displayed:	
Preparation	1

no.	Factname	Value
1	Starting Material BRN	471391
	Starting Material	isocyanatobenzene
	Starting Material BRN	1429620
	Starting Material	2-amino-4-phenyl-thiophene-3-carboxylic acid ethyl ester
	Time	3 hour(s)
	Solvent	benzene
	Solvent	toluene
	Temperature [°C]	120
	Journal Author	Pathak, U S; Gandhi, N V; Singh, S; Warde, R P; Jain, K S, JSBDB, Indian J.Chem.Sect.B, EN, 31, 4, 1992, 223-229